



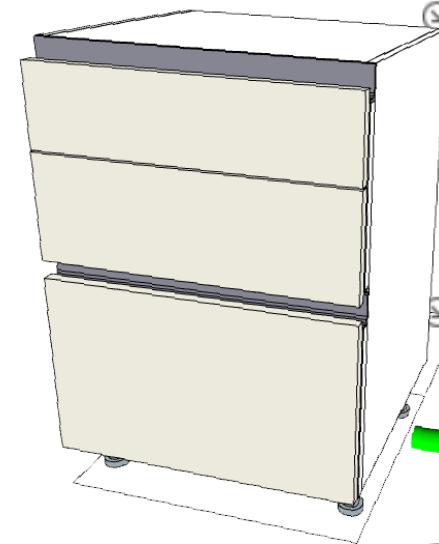
pCon

Installation  
and activation  
process



# Configurable data

- Contains **intelligent information** allowing a considerable increase in work efficiency and quality
  - 2D + 3D geometries
  - materials
  - descriptions
  - prices
  - configuration rules



## Module

Type	Base unit
Shape	Linear
Front	Open
Base	Feet

## Measures

Width	600
Height	780
Depth	570
Total Height	880
Special Measures	No

## Body

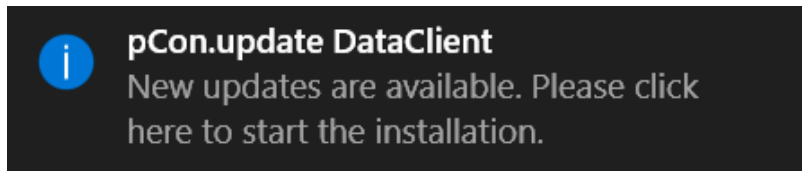
Material Body Type	Laminate
Body Finish	RGB 255-255-255
Material Shelf Type	Laminate
Shelf Finish	RGB 255-255-255

## Price

Price	0.00
-------	------

# Benefits

- Configurable data dramatically reduces the **time** and **cost** to create interior design projects
- Quotation with personalized images one click away
- Eliminate errors while specifying products
- **Automatic notification** when data updates are available



- Free solution for professional users

If you have problems or questions about  
this process please contact us

[contatto@easterngraphics.com](mailto:contatto@easterngraphics.com)

+39.051.587.5509

# (1) Register

- Use the following link

<https://update.easterngraphics.com/registration/DIS5Q3>

- Fill all the fields
  - Registrations with false or incomplete information will be denied
  - Independent professionals should insert in the field **Company** their professional title



LOG IN	REGISTER	MANUFACTURERS	SUPPORT
<b>Register on pCon.update</b>		Please insert your personal information.	
▶ <b>Insert personal information</b>		User name	<input type="text"/>
Confirm e-mail address		Password	<input type="password"/> At least 6 characters
Activation of user account		Repeat password	<input type="password"/>
Select manufacturers		Company	<input type="text"/>
Download software		Title	Mr. <input type="text"/>
		First name	<input type="text"/>
		Last name	<input type="text"/>
		Street address	<input type="text"/>
		Zip code	<input type="text"/>
		City	<input type="text"/>
		Country	Italy <input type="text"/>
		E-mail address	<input type="text"/>
		Phone number	<input type="text"/>
		Language	English <input type="text"/>
		Profession	<input type="checkbox"/> Manufacturer <input type="checkbox"/> Designer <input type="checkbox"/> Distributor <input type="checkbox"/> Agent

## (2) Confirm identity

- After the registration you'll receive an email to confirm your identity
- With a [click on the activation link](#) you'll send a request to activate the account



---

Dear Mr. Easterngraphics

Thank you for your registration on pCon.update.

To continue with your registration, please confirm your e-mail address.



[Confirm e-mail address](#)

This confirmation process is necessary to make sure that the e-mail you entered is correct. If you have not activated this service, please ignore this e-mail.

## (3) Account approval

- You'll **receive another email** when your account has been approved. It's possible that the activation process is not immediate.
- From this moment on you'll have access to the pCon.update portal



---

Dear Mr. Easterngraphics

Your pCon.update account with the user name Easterngraphics Southern Europe has been activated.



Continue registration

# (4) Access the pCon.update portal

- With the username and password created during the registration process you can access the portal [update.easterngraphics.com](http://update.easterngraphics.com)
- In the **Profile** section you can change or update information regarding your account

**pCon UPDATE** | EasternGraphics  
visualize your business

LOG IN REGISTER MANUFACTURERS SUPPORT

## Welcome

pCon.update is the leading platform for getting configurable product data in **OFML format** from more than 100 manufacturers. Combine OFML data and **pCon.planner** for uncomplicated room planning, 3D product configuration as well as for the creation of offers and quotations.

### Login

User name

Password

Log in [Forgot your password?](#)

Following your registration, pCon.update will provide access to product data of a multitude of manufacturers. T

ophelis FAMO denz Alias bma rohde & GRAH



# (5) Request data

- Select the manufacturers to which you wish to request configurable data by clicking on **Subscribe**
- Click on the manufacturer logo to get further information

**NEW** Request the high quality generic kitchen and living libraries with thousands of configurable products

Sorting: Alphabetical Filter

 About Office ✓ Subscribed Unsubscribe	 acousticpearls ✓ Subscribed Unsubscribe	 ACTIU ✓ Subscribed Unsubscribe	 aeris Subscribe	 Akustik Office Systeme Subscribe
 Allermuir Subscribe	 AMS Möbelmanufaktur Subscribe	 Andreu World ✓ Subscribed Unsubscribe	 Arper ✓ Subscribed Unsubscribe	 ASSMANN BÜROMÖBEL Subscribe
 Bene ✓ Subscribed	 Bigla Office	 bimos	 Bisley	 BMA Ergonomics DE

## (6) Data access notification

- You'll **receive an email** when the manufacturer has approved your access to their data
- The time necessary for the approval of the data depends on each manufacturer



---

Dear Mr. Easterngraphics

 Your subscription to **EasternGraphics s.r.l.** has been activated.

You can now use the pCon.update DataClient to download the content provided by EasternGraphics s.r.l..

# (7) Download and install DataClient

- It's necessary to install **pCon.update DataClient** to be able to download pCon.planner ME and the configurable data
- It will maintain your data and all pCon applications always up to date
- In the pCon.update portal, go to **Support** section and download pCon.update DataClient



MANUFACTURERS

ACCOUNT

SUPPORT

## pCon.update DataClient Standard (required)

*Free version*

In order to use pCon.update, you will need the pCon.update DataClient. The DataClient serves to install and to update OFML data as well as pCon applications on your system.

- Size: 24 MB
- Languages: EN, DE, FR, ES, IT, NL, PT, PL
- Operating systems: Windows Vista / 7 / 8 / 10 (32-bit or 64-bit)

 [Download](#)



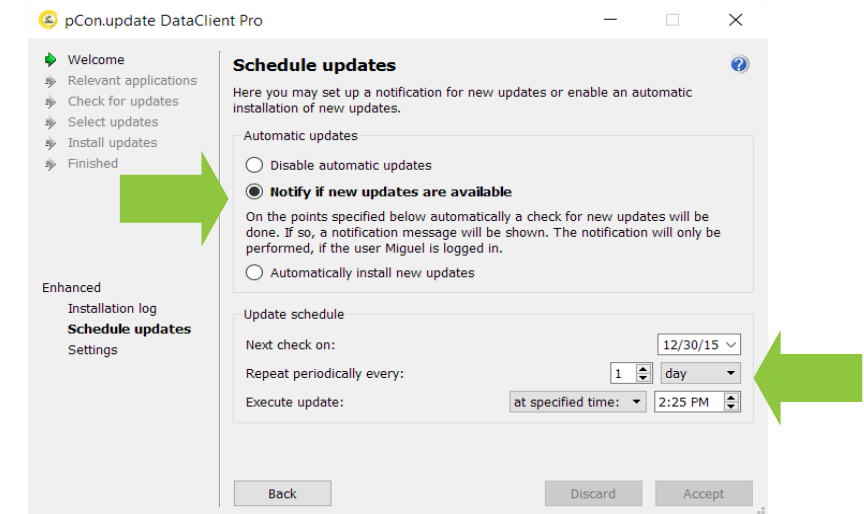
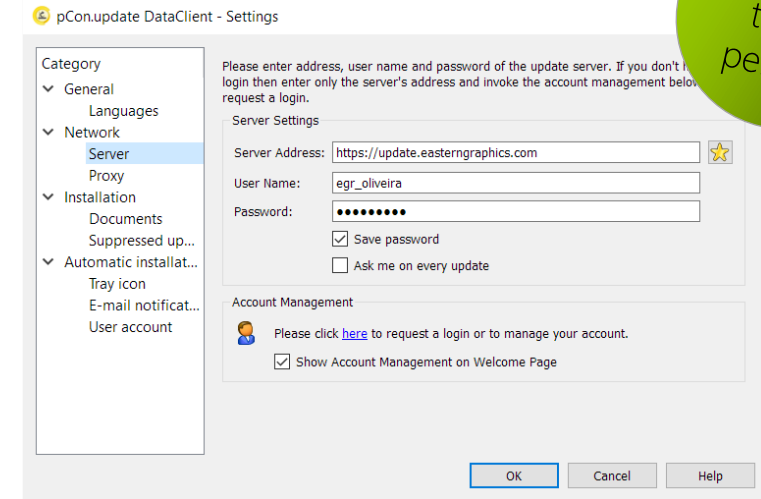
# (8) DataClient initial setup

## Access configuration

- Server address: `http://update.easterngraphics.com`
- User name: defined during registration
- Password: defined during registration
- Activate 'Save password'

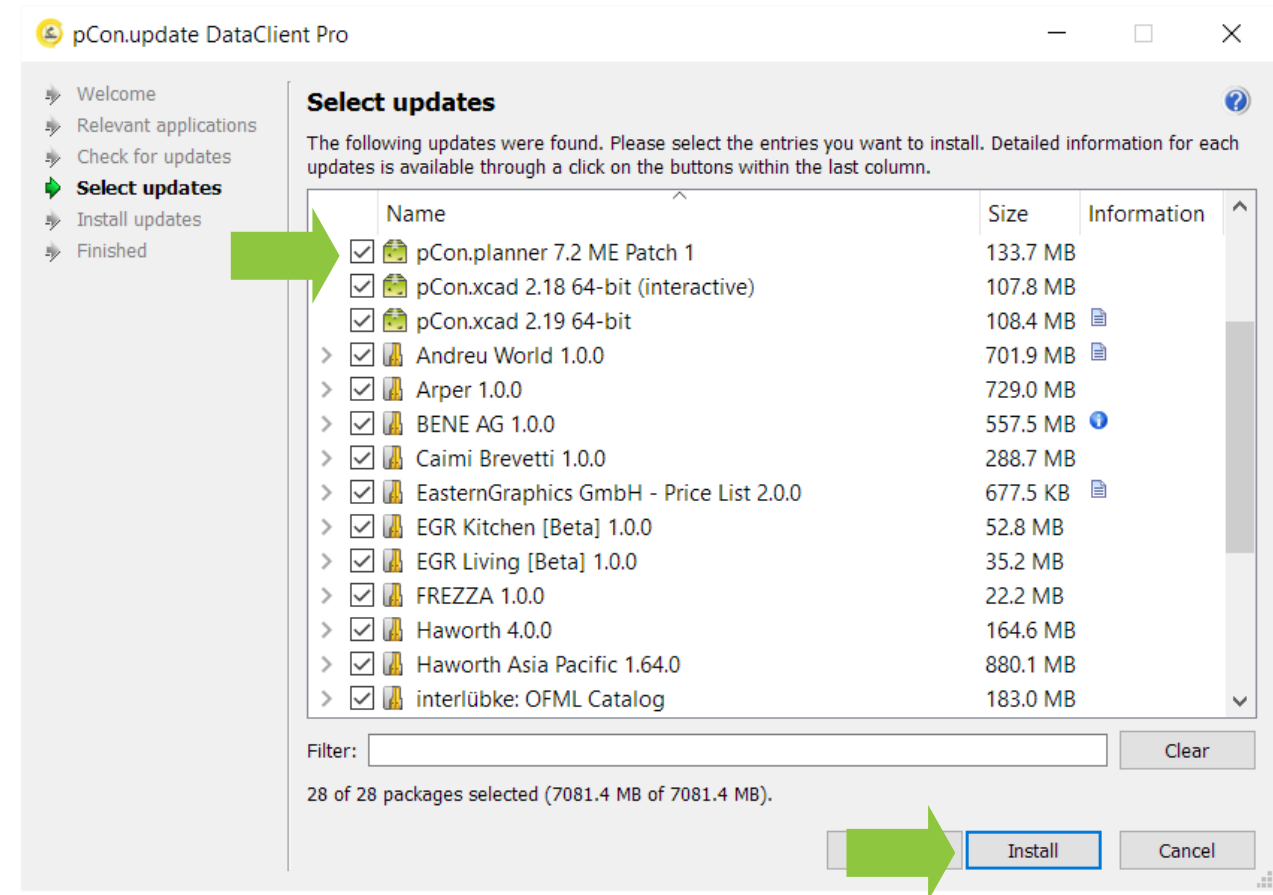
## Schedule updates

- Select the option 'Notify if new updates are available' and set the 'Repeat periodically every' to 'day'
- When new updates are available an automatic notification will be visible



# (9) Install pCon.planner ME

- It's necessary to have installed pCon.planner ME or PRO to process configurable data. The STD version available on our site is not compatible with this type of data
- pCon.planner ME will show up in the window of the available updates
- Click **Install**



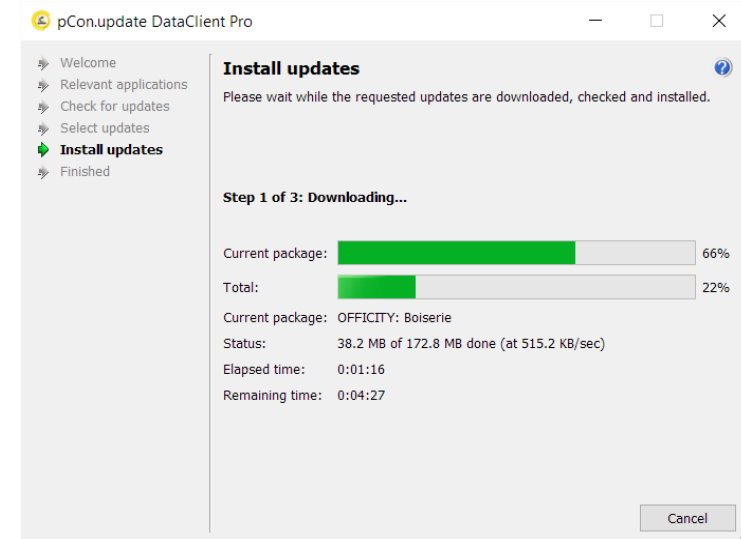
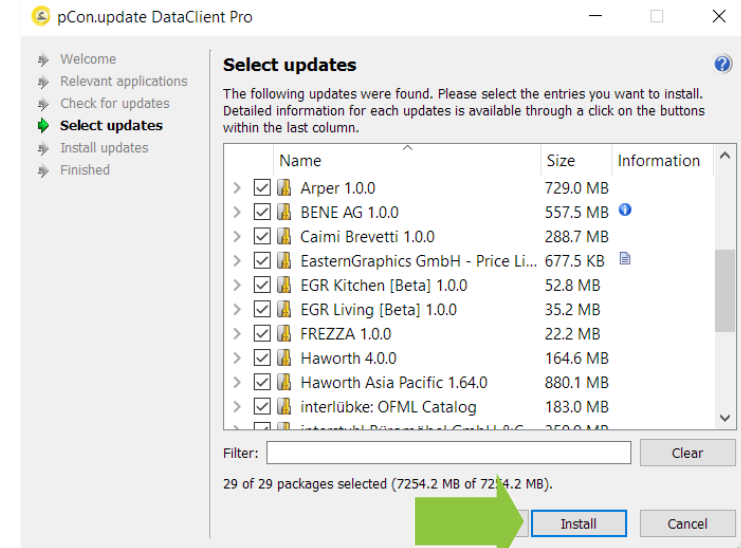
# (10) Install/update data

## Select updates

- We recommend that you always update all data and applications visible in the list

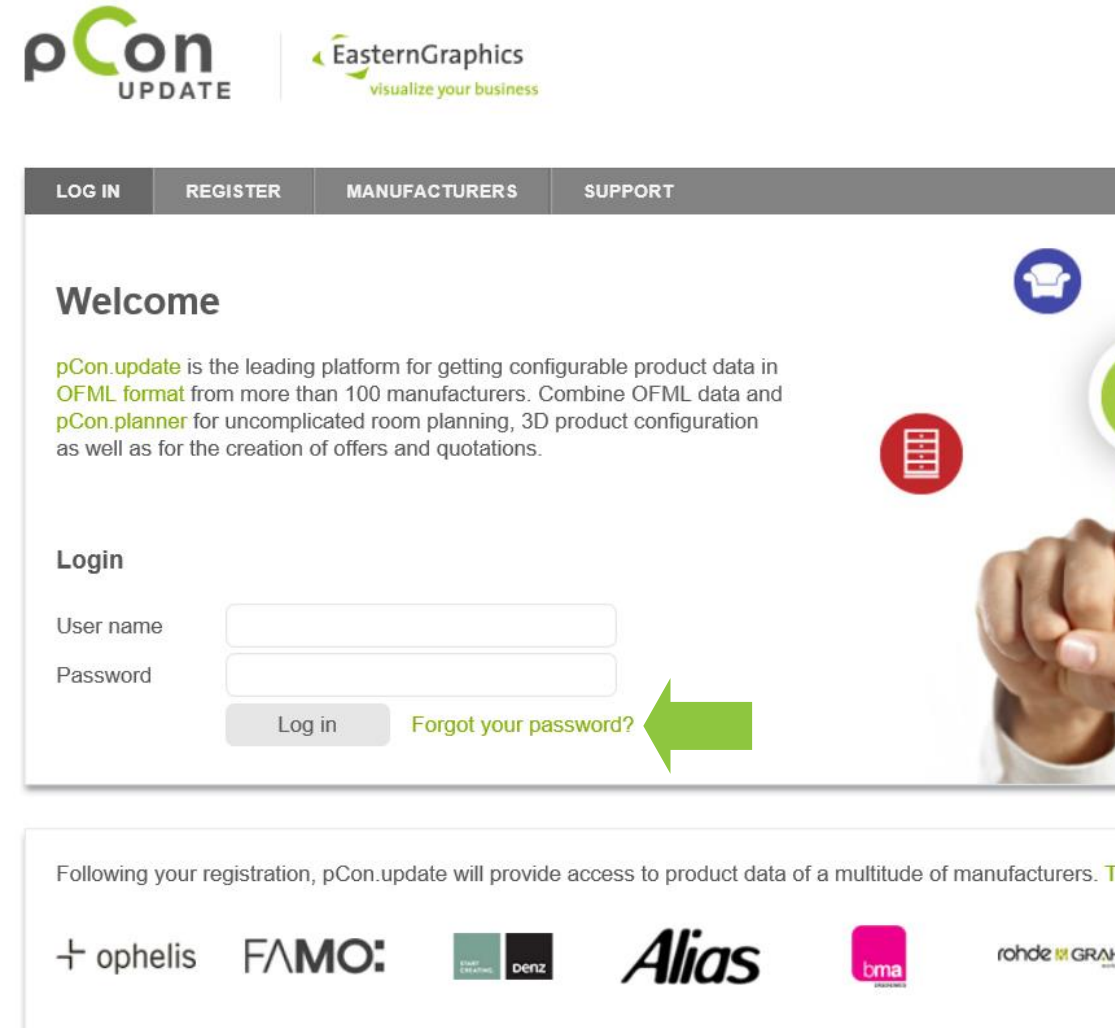
## Install updates

- After selecting the modules to update, the data and applications will be downloaded and installed



# (11) Forgot the password?

- If you forget your access password to pCon.update, you can easily recover it
- Go to the pCon.update portal and click on [Forgot your password?](#) link
- Insert the email address used for the registration and follow the simple steps



The screenshot shows the pCon.update website interface. At the top left is the pCon UPDATE logo, and at the top right is the EasternGraphics logo with the tagline 'visualize your business'. Below the logos is a navigation bar with links for LOG IN, REGISTER, MANUFACTURERS, and SUPPORT. The main content area features a 'Welcome' section with a brief description of the platform's capabilities. Below this is a 'Login' section with input fields for 'User name' and 'Password', a 'Log in' button, and a 'Forgot your password?' link. A green arrow points to the 'Forgot your password?' link. At the bottom of the page, there is a footer with logos for various manufacturers: ophelis, FAMO:, denz, Alias, bma, and rohde & GRAH.